



Government of Western Australia
Department of Training
and Workforce Development




International
Western Australia

TAFE INTERNATIONAL WESTERN AUSTRALIA

COURSE GUIDE

2023



**“TAFE provides
a high level of
education
and practical
courses that
I need for
my career.”**

GOVERNMENT OWNED | PRACTICAL SKILLS | UNIVERSITY PATHWAYS



Coogee Beach jetty, Western Australia

Disclaimer

Every effort has been made to ensure the information in this document is correct at the time of printing, however changes may have been made since that date. The most up to date and accurate information is provided on the website at tafeinternational.wa.edu.au

TAFE International Western Australia reserves the right to alter any course, fee, subject, admission requirement or other arrangement without prior notice.

TAFE International Western Australia (TIWA) is the registered training organisation (RTO) and Commonwealth Register of Institutions and Courses for Overseas Students (CRICOS) provider for the delivery of training to international students enrolled in TAFE courses in Western Australia. These nationally recognised courses are delivered by Western Australian TAFE colleges on TIWA's behalf. TIWA retains responsibility for the quality of the training and assessment delivered by the TAFE colleges and for the issue of certification documentation to students.

📍 TAFE International Western Australia, East Perth TAFE campus, Building B, Level 2, 140 Royal Street, East Perth WA 6004

🌐 tafeinternational.wa.edu.au | 📞 +61 8 9218 2100 | Registered training organisation provider number 52395 | CRICOS provider code 00020G

TAFE INTERNATIONAL **WESTERN AUSTRALIA**

TAFE International Western Australia (TIWA) is owned and operated by the Western Australian (WA) State Government. TIWA facilitates the enrolment of international students into vocational education and training (VET) courses in WA TAFE colleges.

To help you succeed in the future employment market, TIWA offers globally recognised courses delivered by dedicated lecturers with industry experience and connections. You can choose to study from over 100 TAFE courses in a range of specialist areas at 21 different locations across Perth and regional areas of WA.



TABLE OF **CONTENTS**

TAFE International Western Australia	1	North Metropolitan TAFE	9
Study in Western Australia	2	South Metropolitan TAFE	10
Why choose TIWA.....	3	Central Regional TAFE	11
TAFE courses	4	North Regional TAFE	12
English packaging	5	South Regional TAFE	13
Admission requirements	6	UniPathways	14
Application process	7	Setting up home	15
TAFE campuses	8	Student support	16

STUDY IN **WESTERN AUSTRALIA**

If you love adventure, a wonderful climate, and unique cultural and culinary experiences, WA is the perfect place for your education journey.



POPULATION

Over two million people live in WA, the largest state in Australia, offering international students high quality education and an ideal lifestyle.



PERTH

Perth, the capital city of WA, is a vibrant, creative and diverse city with a lot to offer international students. It has a dynamic mix of nightlife, restaurants and cultural experiences. The stunning Elizabeth Quay connects the city centre with the tranquil Swan River. Both WiFi and public transport are free in the city centre. Catch a train or bus and explore Perth's exquisite beaches, parklands and gardens. Watch some sport or a concert at the world class [Optus Stadium](#).



CLIMATE

WA has a great climate, with Perth's average maximum temperatures of 29°C in summer (December to February) and around 19°C in winter (June to August).



TIME ZONE

Direct flights are available to major capitals in Asia, Africa, Europe and the Middle East. WA is in the same time zone as much of Asia, making it easy for you to connect, communicate and travel.



INDUSTRY

Home to a diverse range of industries, WA has a combination of emerging ventures, global businesses and long established companies. WA offers career opportunities with growing demands in healthcare, education, engineering and accounting.



OPPORTUNITIES

Perth is a designated regional centre, so you also have opportunities to work and live in WA after you graduate. While studying, you can gain valuable experience by working part time.



PART TIME WORK

To support living expenses while studying in Australia, many international students choose to find a [part time or casual job](#). Our campuses are conveniently located near casual and part time work opportunities, making it easier to find a job while you are here.



LIFESTYLE

In 2021, Perth was ranked the sixth most liveable city in the world.

([Economist Intelligence Unit – The Global Liveability Index 2021](#)).



Cottesloe Beach, Western Australia
© Tourism Western Australia

WHY CHOOSE TIWA



We offer certificates, diplomas and advanced diplomas in a wide range of interesting study areas. Choose TIWA for the following great reasons.



ACCESSIBLE

Flexible entry points, pathways to university and convenient campus locations



AFFORDABLE

Benefit from a faster, more cost effective pathway to complete a qualification and enter the workforce



DIVERSE

Over 100 courses delivered across 21 campus locations around Perth and regional WA



EMPLOYABLE

Combine your passions and interests with a qualification and skills for your future career



EQUIPPED

Benefit from learning with current technology and equipment used in the workplace



INTEGRATED

Graduate with confidence through hands on learning and practical training aligned to industry needs



REGIONAL

Enjoy a relaxed lifestyle and a personalised study experience in WA's pristine regional areas



QUALITY

Government owned with globally recognised courses taught by industry connected lecturers



"The best thing about my course is the hands on training and also the modern facilities and equipment. I really felt I received a high quality engineering education from TAFE. I gained new practical skills and not only theory based training. TAFE provides a globally accredited education that assists students to harness their skills and potential to be job ready in the future."

John Erick Flores | Philippines

MEM50212 Advanced Diploma of Engineering

TAFE COURSES



TIWA is dedicated to employment-focused education, and well equipped to ensure that you are job ready upon completing your study. Specialising in hands on learning, TIWA helps to prepare you for the workforce. You can choose from our diverse range of courses below. Visit our website at tafeinternational.wa.edu.au/courses for more information, including intakes, fees and course details.



ACCOUNTING, BUSINESS AND MARKETING

Accounting
Business
Marketing and Communication



ANIMAL CARE AND AQUACULTURE

Animal Care Services
Aquaculture
Fishing Operations
Veterinary Nursing



AUTOMOTIVE, ENGINEERING AND OIL AND GAS

Automotive Technology
Civil and Structural Engineering
Engineering – Technical
Engineering – Mechanical
Engineering – Heating, Ventilation and Air Conditioning
Engineering Technology – Electrical
Process Plant Technology
Surveying



AVIATION

Aviation Management



BUILDING AND CONSTRUCTION

Building and Construction – Building
Building Design
Bricklaying/Blocklaying
Carpentry
Civil Construction Design
Residential Drafting



CREATIVE INDUSTRIES

Applied Fashion Design and Merchandising
Creative Product Development Photography
Design Fundamentals
Film and Television
Graphic Design
Interior Design
Music – Performance
Music – Sound Production
Screen and Media – Digital Art and Animation
Screen and Media – Digital Cinema
Screen and Media – Game Art and Design
Visual Arts



DIGITAL MEDIA AND INFORMATION TECHNOLOGY

Information Technology – Advanced Networking
Information Technology – Advanced Programming
Information Technology – Back End Web Development
Information Technology – Front End Web Development
Information Technology



EARLY CHILDHOOD EDUCATION AND COMMUNITY SERVICES

Individual Support – Ageing
Individual Support – Ageing, Home and Community
Community Services
Early Childhood Education and Care
Youth Work



HEALTH, FITNESS AND BEAUTY

Beauty Therapy
Hairdressing
Remedial Massage



HOSPITALITY, COOKERY AND TOURISM

Commercial Cookery
Event Management
Events
Hospitality
Hospitality Management
Kitchen Management
Patisserie
Travel and Tourism Management
Tourism



LAND AND ENVIRONMENTAL MANAGEMENT

Environmental Monitoring and Technology
Horticulture
Laboratory Technology



MARITIME

Marine Engineering (class 1) – Engineer class 1 (Motor)
Maritime Operations – Master Unlimited



NURSING

Preparation for Health and Nursing Studies
Nursing



ENGLISH PACKAGING

When you apply directly to TIWA for a TAFE course, our admissions team will assess whether or not you require an English Language Intensive Courses for Overseas Students (ELICOS).

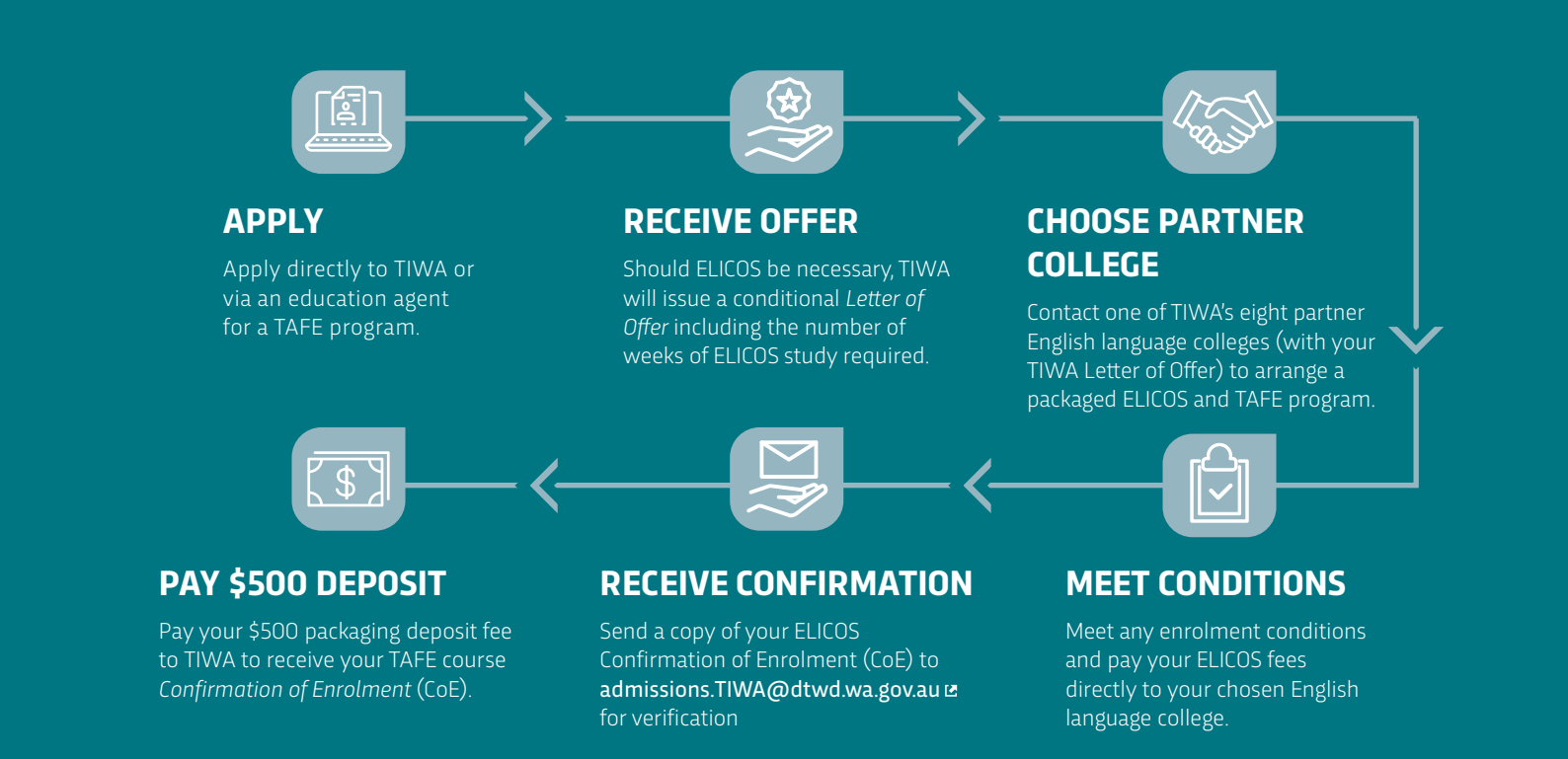
Should ELICOS be necessary a conditional *Letter of Offer* outlining the number of weeks required will be issued. While ELICOS is not offered at TIWA, you can package your English studies with one of TIWA's eight partner English language colleges. You simply choose the provider of your choice and contact them directly to organise a packaged offer.

The minimum level of English proficiency required for entry to most TAFE courses is the equivalent of an overall academic International English Language Testing System (IELTS) score of 5.5 with no individual band score lower than 5.0. For some countries we may accept your high school English results. Visit our website at tafeinternational.wa.edu.au/courses for more information.

PARTNER ENGLISH LANGUAGE COLLEGES

- » Kaplan International English (CRICOS provider 01784K) [🔗](#)
- » Language Links (CRICOS provider 02139) [🔗](#)
- » Lexis English Perth / Sydney / Noosa and Sunshine Coast / Byron Bay / Brisbane (CRICOS provider codes 03274E; 02362B; 01632D; 03019J; and 02499G) [🔗](#)
- » Milner International College of English (CRICOS provider 00061) [🔗](#)
- » Navitas English Perth and Sydney (CRICOS provider 00289M) [🔗](#)
- » Perth International College of English (PICE) (CRICOS provider 02368G) [🔗](#)
- » Phoenix Academy (CRICOS provider 00066D) [🔗](#)
- » University of Western Australia Centre for English Language Teaching (CRICOS provider 00126G) [🔗](#)

For more information please visit tafeinternational.wa.edu.au/englishproviders.



APPLY

Apply directly to TIWA or via an education agent for a TAFE program.

RECEIVE OFFER

Should ELICOS be necessary, TIWA will issue a conditional *Letter of Offer* including the number of weeks of ELICOS study required.

CHOOSE PARTNER COLLEGE

Contact one of TIWA's eight partner English language colleges (with your TIWA Letter of Offer) to arrange a packaged ELICOS and TAFE program.

PAY \$500 DEPOSIT

Pay your \$500 packaging deposit fee to TIWA to receive your TAFE course *Confirmation of Enrolment (CoE)*.

RECEIVE CONFIRMATION

Send a copy of your ELICOS Confirmation of Enrolment (CoE) to admissions.TIWA@dtwd.wa.gov.au for verification

MEET CONDITIONS

Meet any enrolment conditions and pay your ELICOS fees directly to your chosen English language college.

ADMISSION REQUIREMENTS

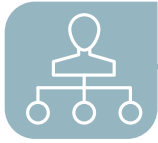
Country	Year 10/11 equivalent	Year 12 equivalent	English equivalent
Bhutan	Bhutan Middle Secondary School Certificate	Bhutan Higher Secondary School Certificate or Middle Secondary School Certificate plus 2 year relevant vocational diploma.	
Brazil	Certificado de Ensino Medio	Certificado de Ensino Medio from 2011 (Year 12 equivalent). ** Certificado de Ensino Medio plus one year Diploma or higher qualification (pre 2011)	
China	Senior Secondary School Year 1 (Year 10 equivalent) Senior Secondary School Year 2 (Year 11 equivalent)	Senior Secondary Certificate (Senior School Year 3)	
Hong Kong	Secondary 4 or Secondary 5 or Hong Kong Certificate of Education Examination (HKCEE)	Hong Kong Diploma of Secondary Education (HKDSE) or Hong Kong Advanced Level Examination (HKALE)	HKDSE: 3 HKCEE: D grade
India	CBSE or CISCE 60% average across all academic subjects or State education boards 65% average across all academic subjects. TIWA assesses state education boards on a case by case basis. Some state education boards are not accepted.	CBSE or CISCE 60% average across all academic subjects or State education boards 65% average across all academic subjects. TIWA assesses state education boards on a case by case basis. Some state education boards are not accepted.	IELTS 6.0 (or equivalent) overall (no band less than 5.5) direct entry. IELTS 6.0 (or equivalent) overall (no band less than 5.0) - course will be packaged with 10 weeks ELICOS prior to entry.
Indonesia	Secondary School SMU 2	Senior Secondary School Certificate of completion (Ijazah/ STTB SMA/STTB SMK/STTB MA)	
Japan	Completion of Kotogakko Year 1 lower Secondary Leaving Certificate	Kotogakko Shomeisho / Upper Secondary School Certificate	
Kenya	KCSE pass or four passes at GCE O-Level	KCSE C grade average or two passes at A-Level or 1 A-Level pass and two AS-Level passes or IB Diploma	C grade in KCSE English
Malaysia	Four passes D grade or higher at SPM, O-Level or UEC Senior Middle 2	Two passes at STPM or A-Level or two Bs and two Cs in UEC academic subjects	B grade in SPM 1119 English or C grade in SPM 1119 GCE-O English
Mauritius	Four passes at GCE O-Level	Two passes at A-Level or one pass at A-Level pass and two passes at AS-Level or IB Diploma	
Philippines	Post 2016 - Certificate of High School Graduation/Year 10/11 High School Diploma	Post 2016 - Certificate of High School Graduation /Year 12 High School Diploma	
South Korea	10 or 11 years of school	General/Academic Senior High School Certificate/Diploma. (Kodung Hakkyo Choreupchang)	
Taiwan	Senior High School (1st or 2nd Year)	Senior High School Diploma or Senior Vocational School Diploma	
UK	Four passes at GCE O-Level	Two passes at GCE A-Level	
Vietnam	Upper Secondary schooling (Year 10 or 11 equivalent)	Diploma of General Education or Vocational Education Graduation Diploma or Vocational Training Diploma	
Zimbabwe	Four passes GCE or ZGCE O-Level	Two passes at A-Level or 1 pass at A-Level and two passes at AS-Level or IB Diploma	

Please note that entrance may also be possible for mature age students without the grades listed above, based on appropriate work experience.

Depending on your nationality, the Australian Department of Home Affairs may only accept a formal English language test result such as IELTS, Pearson Test of English, Test of English as a Foreign Language (TOEFL), as proof of English competency for student visa purposes. Please refer to the immi.homeaffairs.gov.au/visas/getting-a-visa/visa-finder/study for details.

Refer to tafeinternational.wa.edu.au/admission-requirements for any updates to admission requirements or if your country is not listed above. Some courses require a portfolio and/or interview for entry. These requirements can be found at tafeinternational.wa.edu.au/folio-requirements.

APPLICATION PROCESS



CHOOSE YOUR COURSE

Choose your course and check the admission requirements. Visit our website at tafeinternational.wa.edu.au/courses.



SUBMIT AN APPLICATION

Submit your application using the online application form on our website tafeinternational.wa.edu.au/apply.

You can apply directly or through one of TIWA's approved education agents. If you wish to use an education agent to assist with your application you can view a list at tafeinternational.wa.edu.au/agentfinder.



RECEIVE OFFER

On receipt of your application and supporting documentation, we will assess your eligibility to study your selected course(s). We will then send you a *Letter of Offer* provided you meet eligibility requirements for admission and there are places available. This letter will be sent to you either directly or through the agent you have nominated.



RECEIVE YOUR CONFIRMATION OF ENROLMENT (COE)

After you have met all the conditions, signed the *Letter of Acceptance* and made payment, you will be issued your CoE. You can then apply for your student visa by visiting the Department of Home Affairs website at homeaffairs.gov.au/visas/getting-a-visa/visa-finder/study.



ACCEPT OFFER

To accept your offer you need to sign the *Letter of Acceptance* and make payment.



MEET CONDITIONS

You are required to meet any conditions listed in your *Letter of Offer* before accepting the offer and making payment.

START YOUR STUDIES



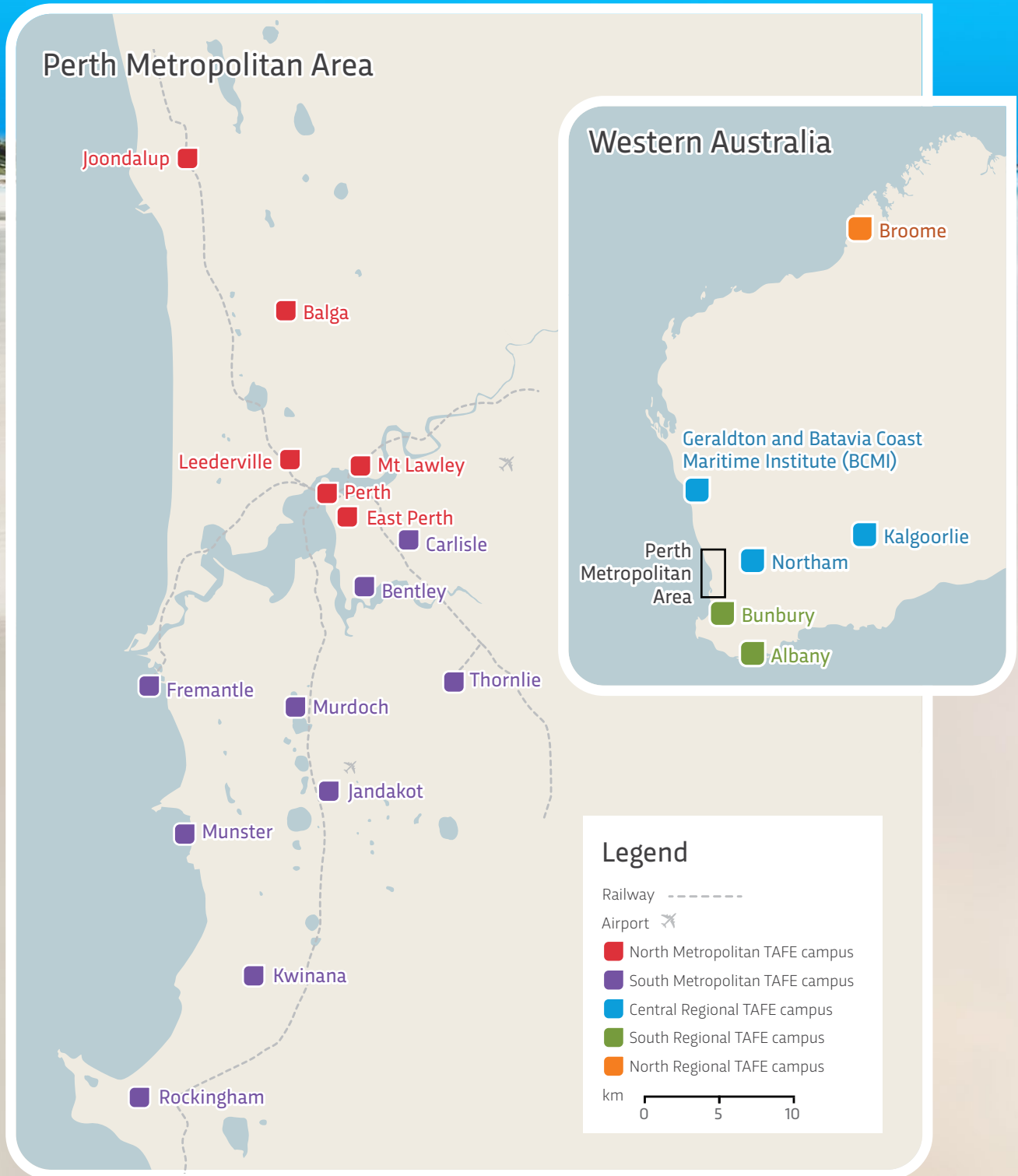
When your student visa is issued you can make plans to start your studies at TIWA. Before making travel arrangements, check the orientation dates for your campus as you need to arrive in time for orientation. For orientation information please visit tafeinternational.wa.edu.au/orientation.

For further information regarding the application process please visit tafeinternational.wa.edu.au/application-process.



TAFE CAMPUSES

You'll be spending a lot of time at your campus during your studies in WA. It's important to know about your future TAFE campus location. There are 21 campus locations in WA to choose from. You may find that your chosen course is available at a number of locations ranging from Perth's busy city centre, to WA's relaxing coastal towns.



NORTH METROPOLITAN TAFE



North Metropolitan TAFE is the largest TAFE college in WA with campuses spread across the north metropolitan area of Perth. You can benefit from real world, hands on training in simulated environments to guarantee that you gain the best skills and knowledge in your chosen area. Lecturers are experts in their field and are constantly talking to employers – so you get training that is current, relevant and demanded by industry, giving you a competitive edge.

tafeinternational.wa.edu.au/campuses
RTO Code: 52786

📍 CAMPUS LOCATIONS

- » Balga
- » East Perth
- » Joondalup
- » Leederville
- » Mt Lawley
- » Perth

★ SPECIALTY COURSES

- » Accounting, Business and Marketing
- » Animation and Gaming
- » Building and Construction
- » Creative Industries
- » Early Childhood Education and Care
- » Engineering
- » Environment and Laboratory Studies
- » Hospitality, Cookery, Tourism and Events
- » Information Technology
- » Massage, Beauty and Hairdressing
- » Nursing

🏛️ COLLEGE FACILITIES

- » Art gallery
- » Beauty, hairdressing and massage clinics
- » Cafes and restaurants
- » Gyms
- » Libraries and bookshops
- » Prayer rooms
- » Wireless internet access



"I studied communication and media in Brazil, and I have worked in TV. My class at TAFE was a mix of Australian students and international students, which was wonderful. I loved the experience learning from other students. The classes are so practical and for me, there's no better way to learn than by doing. While studying at North Metropolitan TAFE, I have learned how to work on international projects. I am looking forward to getting a job in the field and very grateful for everything I learned here."

Maria Christina Minozzo Poletto | Brazil

CUA51015 Diploma of Screen and Media - Film & Television

SOUTH METROPOLITAN TAFE



South Metropolitan



South Metropolitan TAFE is one of Western Australia's largest and most diverse vocational training providers, delivering training to thousands of local and international students every year.

CAMPUS LOCATIONS

- » Bentley
- » Carlisle
- » Fremantle (Maritime Training Centre)
- » Jandakot (AeroSpace Training Centre)
- » Kwinana
- » Munster (Australian Centre For Energy and Process Training — ACCEPT)
- » Murdoch
- » Rockingham
- » Thornlie

SPECIALTY COURSES

- » Animal Care and Aquaculture
- » Applied Fashion and Merchandising
- » Aviation
- » Automotive, Engineering and Process Plant Technology
- » Carpentry and Bricklaying
- » Community Services
- » Conservation and Ecosystem Management
- » Cookery and Hospitality
- » Early Childhood Education
- » Enrolled Nursing
- » Hospitality
- » Horticulture
- » Information Technology
- » Maritime

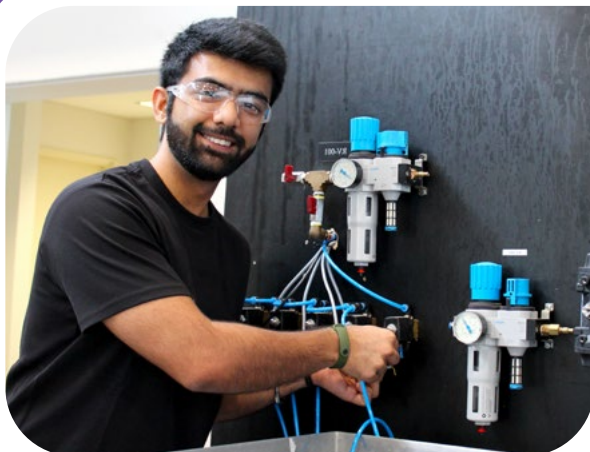
Our training facilities are extensive and, depending on your course, you may experience training in the award winning Bentley Pines training restaurant or the fully operational oil and gas facility at the Australian Centre For Energy and Process Training (ACCEPT).

We also know there's more to student life than just study, so you may want to get involved in the college social activities, such as the annual Rottneest Island tour — a great way to meet new friends. Study support is also available on campus, to help you reach your study goals.

tafeinternational.wa.edu.au/campuses
RTO Code: 52787

COLLEGE FACILITIES

- » ACCEPT — Oil and Gas Process Plant
- » Bentley Bakery
- » Bentley Pines training restaurant
- » Massage clinics
- » Wireless internet access
- » Libraries
- » Murdoch student garden centre
- » Pet grooming clinic
- » Prayer rooms
- » Student veterinary clinic



"It was a fantastic experience studying at South Metropolitan TAFE. The teachers were always available to help and they often took extra time to explain certain concepts. The teachers were highly knowledgeable with years of industry experience. The teaching style and organisation of the course, combined with the right tools and equipment, made learning super interactive. The hands on experience gained via numerous projects, assessments and classes has helped me expand my insights into the actual functioning of the electrical industry."

Amrtikumar Prem Rajwani | India

UEE62111 Advanced Diploma of Engineering
Technology Electrical



The Central West region of WA is dotted with fascinating historical towns and world-famous beaches, and is surrounded by unique wilderness.

CAMPUS LOCATIONS

- » Geraldton (418km from Perth)
- » Batavia Coast Maritime Institute (414km from Perth)
- » Northam (98km from Perth)
- » Kalgoorlie (600km from Perth)

SPECIALTY COURSES

- | | |
|--------------------------------------|---|
| » Aquaculture and Fishing Operations | » Information Technology |
| » Community Services | » Early Childhood Education |
| » Cookery | » Environmental Monitoring and Technology |
| » Digital Media and | » Nursing |

COLLEGE FACILITIES

- | | |
|-------------------------------------|---|
| » Student Accommodation Village | » Childcare |
| » 24hr computer and internet access | » Student training restaurant (Zeewijk) |
| » Café | » Free parking and WiFi |
| » Jobs and Skills Centre | » Bike and skateboard zones |
| » Library and bookshop | |

Central Regional TAFE’s campuses located in Kalgoorlie, Northam, Geraldton and the Batavia Coast Maritime Institute provide training focused on real life learning experiences to give you skills for future work or pathways into university.

tafeinternational.wa.edu.au/campuses
RTO Code: 52789



“The lecturers at Central Regional TAFE are knowledgeable in their field and supportive of their students. The coursework and lecturers have given me the confidence and knowledge to assess certain situations and make decisions based on a patient’s health. I had the opportunity to work in a nursing home and in a hospital. Although both placements were daunting at first, the lecturers were there to guide us. I am hoping that completing my course will enable me to be a great nurse no matter where I am in the world.”

Romy Altenburger | South Africa
HLT54115 Diploma of Nursing

NORTH REGIONAL TAFE



North Regional TAFE Broome campus is located in the Kimberley region of North West WA, an area of amazing beauty offering unique wilderness experiences.

The campus is situated between Broome's town centre and the iconic Cable Beach, so you can gain unique experiences living with spectacular sandy beaches, turquoise water, and red soil right on your doorstep.

📍 CAMPUS LOCATIONS

- » Broome (2045 km from Perth)

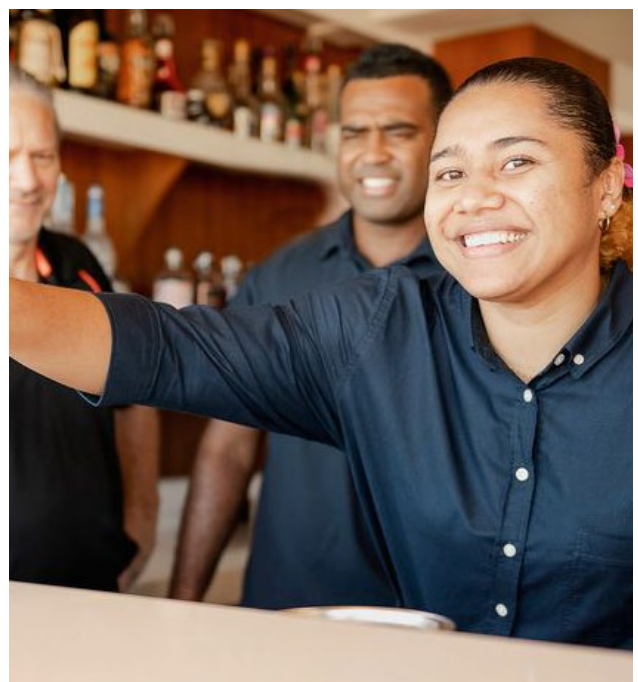
★ SPECIALTY COURSES

- » Community services
- » Hospitality

tafeinternational.wa.edu.au/campuses
RTO Code: 52788

🏛️ COLLEGE FACILITIES

- » Student Hub with break facilities, computers and internet access
- » On-campus Lime Leaf Café
- » Hospitality training restaurant – open to students and the public
- » Hair & Beauty training salon
- » Jobs and Skills Centre



SOUTH REGIONAL TAFE



South Regional TAFE's Albany and Bunbury campuses are located in the beautiful South West region of WA. You can enjoy the region's pleasant climate, spectacular coastal scenery and recreational areas.

In addition to the high-quality facilities and training on offer at South Regional TAFE, you will have access to a range of amazing activities and experiences, from meeting local wildlife, to enjoying pristine beaches, and exploring beautiful forests and caves.



📍 CAMPUS LOCATIONS

- » Bunbury (173km from Perth)
- » Albany (418km from Perth)

★ SPECIALTY COURSES

- » Early Childhood Education and Community Services
- » Hospitality

🏛️ COLLEGE FACILITIES

- » Student parking
- » Student canteen
- » Training restaurants
- » Learning resource centre
- » Gymnasium
- » Epicure training restaurant
- » Hairdressing and beauty salon

tafeinternational.wa.edu.au/campuses
RTO Code: 52790



"I feel very blessed to be able to enjoy a work and study life balance with breathtakingly beautiful nature surrounding me. What I love most about my course at South Regional TAFE is how the training is very hands on. The training environment is very conducive to learning and is designed to mimic the real life hospitality industry. A special bonus for me is how awesome my lecturers are. They are very supportive, approachable and fun. I truly see that they are very passionate at what they do and teach, which inspires me more to learn from them."

Patricia Myra Rominallos | Philippines
SIT50416 Diploma of Hospitality Management



UNIPATHWAYS

TIWA offers pathways to three of Australia's leading universities. With a large range of UniPathway combinations, TIWA offers more study options for students.

WHAT IS A UNIPATHWAY?

If you would like to study a university degree, and don't have the academic requirements, a TIWA UniPathway can help you reach your education goals.

HOW DOES IT WORK?

TIWA has a number of diploma and advanced diploma courses that can be packaged with bachelor degrees. If eligible, you will receive two offers — from TIWA and from your chosen university. UniPathways allow you to have a planned pathway for study at both vocational and educational training (VET) and university levels. On completion of your TAFE and university studies, you will have two qualifications that will give you a competitive edge in the global job market. Some courses at TAFE have a strong practical component, which is in high industry demand.

UNIPATHWAY PACKAGES

TIWA has partnerships with Curtin University, Edith Cowan University and Murdoch University. We can arrange a TAFE to university packaged offer for a wide range of courses. This allows you to apply for one student visa and the university degree will be your principal course.

Please read the following before you apply for a university package.

- » You must apply through an education agent registered to represent both TIWA and your chosen university.
- » You can package English with your TAFE and university courses, but the duration of your English studies will be limited.
- » You must request the university package at the time you are applying for TIWA.
- » Any advanced standing or credit for recognised learning will be reflected on your university offer.

UniPathway options available at tafeinternational.wa.edu.au/unipathwayfinder

Information regarding university pathways is correct at the time of printing and may change at any time.

ARTICULATION

If you want to keep your study options open, you can still apply to study at university at a later date. TIWA has a number of diploma and advanced diploma courses that will give you advanced standing or credit for recognised learning once you complete your studies. These credit transfers will be applied when you commence your undergraduate degree studies at university and will vary depending on the course and electives you have completed with TIWA.

You can [visit our website](#) or contact the universities directly for more information.



CRICOS Provider Code 00301J



CRICOS Provider Code 00279B



CRICOS Provider Code 00125J

SETTING UP HOME



ARRIVAL

On your arrival in Perth, airport pick-up can be arranged at a cost of \$130 AUD. You will be taken directly to your homestay family; temporary accommodation; or your own accommodation.

Please contact Australian Homestay Network (AHN) to organise this service at homestaynetwork.org

A taxi from the airport to central Perth costs approximately \$50 AUD. An airport bus is also available and can drop passengers at central city hotels.



HOMESTAY

The Australian Homestay Network (AHN) can organise a homestay that will allow you to live with an Australian family. Homestay is compulsory for students under 18 years of age. Homestay costs between \$180–\$325 AUD per week, depending on your age and level of service provided. There is also a placement fee of \$290 AUD.*

For more information and to make a booking visit homestaynetwork.org



RENTAL ACCOMMODATION

Many students choose to share a rental house or apartment with other students as this reduces costs. Student accommodation is also available in the heart of downtown Perth which provides a great opportunity to meet other students.

Campus Perth — campusperth.com

The Boulevard — thestudenthousingcompany.com.au/locations/perth/the-boulevard/



OVERSEAS HEALTH COVER

All international students studying in Australia are required to pay Overseas Student Health Cover (OSHC) for the entire duration of their student visa.

OSHC is offered by a number of different providers and you must purchase your health cover from a government approved provider. You should compare alternative OSHC providers to find one that suits your budget and needs.

You will need to show evidence of your health cover payment to the Department of Home Affairs when you apply for your student visa.

To view more information, please visit our website at tafeinternational.wa.edu.au/health-cover



CAMPUS LIVING VILLAGES

Accommodation is available at several different university locations in Western Australia. Check out the links below for further information.

Campus living villages — campuslivingvillages.com/australia/perth

Pepperell Village, Geraldton — centralregionaltafe.wa.edu.au/geraldton



TEMPORARY ACCOMMODATION

There is a range of temporary accommodation on offer in Perth, which you can search for on the internet and book online.

For more information about any of these accommodation options please visit tafeinternational.wa.edu.au/accommodation

LIVING EXPENSES

The costs shown here are an approximate guide only of living costs you may incur as an international student in Australia. For more information visit studyaustralia.gov.au/english/live-in-australia/living-costs

Item	Cost per week (AUD)	
Homestay	\$235	– \$325
Rental	\$185	– \$440
Groceries and eating out	\$140	– \$280
Gas, electricity	\$10	– \$20
Phone and internet	\$15	– \$30
Public transport	\$30	– \$60
Entertainment	\$80	– \$150

STUDENT SUPPORT

TIWA is the registered training organisation (RTO) and Commonwealth Register of Institutions and Courses for Overseas Students (CRICOS) provider for the delivery of training to international students, enrolled in TAFE (technical and further education) courses in Western Australia. These nationally recognised courses are delivered by Western Australian TAFE colleges on TIWA's behalf. TIWA retains responsibility for the quality of the training and assessment delivered by the TAFE colleges and for the issue of certification documentation to students.



SUPPORT AT TIWA

TIWA can assist with a range of issues relating to your enrolment including:

- » advice on courses and pathways;
- » your application for enrolment;
- » updating your contact details (ie address, email, mobile); and
- » how to pay your fees.



CONTACT US

Once you arrive in Perth, you can visit us at the following address.

East Perth TAFE campus
Building B, Level 2, 140 Royal Street
East Perth

You can also call us on

☎ +61 8 9218 2100

or send us an email at

✉ admissions.tiwa@dtwd.wa.gov.au



SUPPORT AT YOUR TAFE COLLEGE

The International Centre at your TAFE college can also provide support for any study or personal issues including:

- » advice and support on courses and pathways;
- » application for continuing enrolment;
- » advice on change of course/unit pathways;
- » updating your contact details (ie address, email, mobile numbers);
- » monitoring class attendance and progress;
- » orientation;
- » safety and welfare advice;
- » identifying suitable local accommodation;
- » Transperth information on public transportation (buses and trains);
- » class timetables; and
- » student ID cards.




STUDENT EVENTS

We have a range of activities, both on and off campus, which can give you the opportunity to meet other international and local students in a fun and relaxed environment.





Your Local Agent

More information can be found at tafeinternational.wa.edu.au 

Address: East Perth TAFE campus, Building B, Level 2
140 Royal Street, East Perth WA 6004
Telephone: +61 8 9218 2100

Email: study.TIWA@dtwd.wa.gov.au

RTO number 52395 | CRICOS provider code 00020G
Issue date: 17 February 2023

© 2023 TAFE International Western Australia



STUDY
Perth

